

## Technology and Nature Tour

Nature spurs on technological developments. Humans use technology to exploit and destroy nature. The exhibitions and the museum park illustrate the interaction of nature and technology.

1

### Horse stairs

Entrance building, GF



Wooden element at the entrance, material lift, troughs and rings, 2<sup>nd</sup> floor Paper technology  
*Animals adapt to their environment.*

2

### Paper mould

Entrance building, 2<sup>nd</sup> fl.



Strainer, vat, felt and press  
*Raw materials form the basis of cultural development.*

3

### Whaling harpoon

New building, 2<sup>nd</sup> fl.



Harpoons, lances, whale voices  
*Nature exploited*

4

### Air glider

New building, 3<sup>rd</sup> fl.



Stork, replicas of Lilienthal's gliders  
*Nature provides models for technological development.*

5

### Post mill and smock mill

Museum park



*Utilising natural forces for production*

6

### Museum park

Railway land vegetation, railway tracks  
*Interaction of nature and technology*



## Technology and War Tour

The museum allows visitors to contemplate the constructive and destructive effects of technical inventions. Technology fulfils whatever purpose humans assign to it.

1

### War locomotive

Engine shed 2



Locomotive of the 52 series  
*Technology serving war*

2

### Locomotive of a debris train

Engine shed 2



Narrow gauge railway, brick cleaning device  
*Technology serving reconstruction*

3

### Submarine

New building, 2<sup>nd</sup> fl.

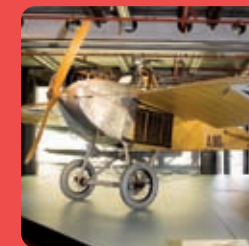


Biber midget submarine, sound film  
*A technology race during the war*

4

### Scout plane

New building, 3<sup>rd</sup> fl.



Jeannin Stahltaube (Steel Dove), media station  
*The switch from peace technology to war technology*

5

### Dive bomber

New building, 4<sup>th</sup> fl.

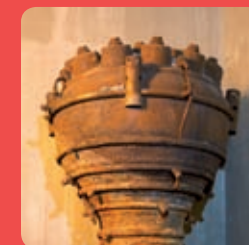


Stuka 87, media station  
*Technology serving the destruction of life*

6

### Rocket

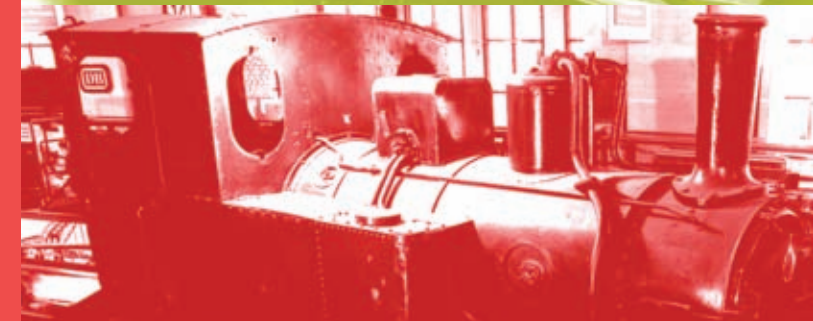
New building, 4<sup>th</sup> fl.



V 2, silent and sound films, interviews with contemporary witnesses  
*Humans' attitude to technology*

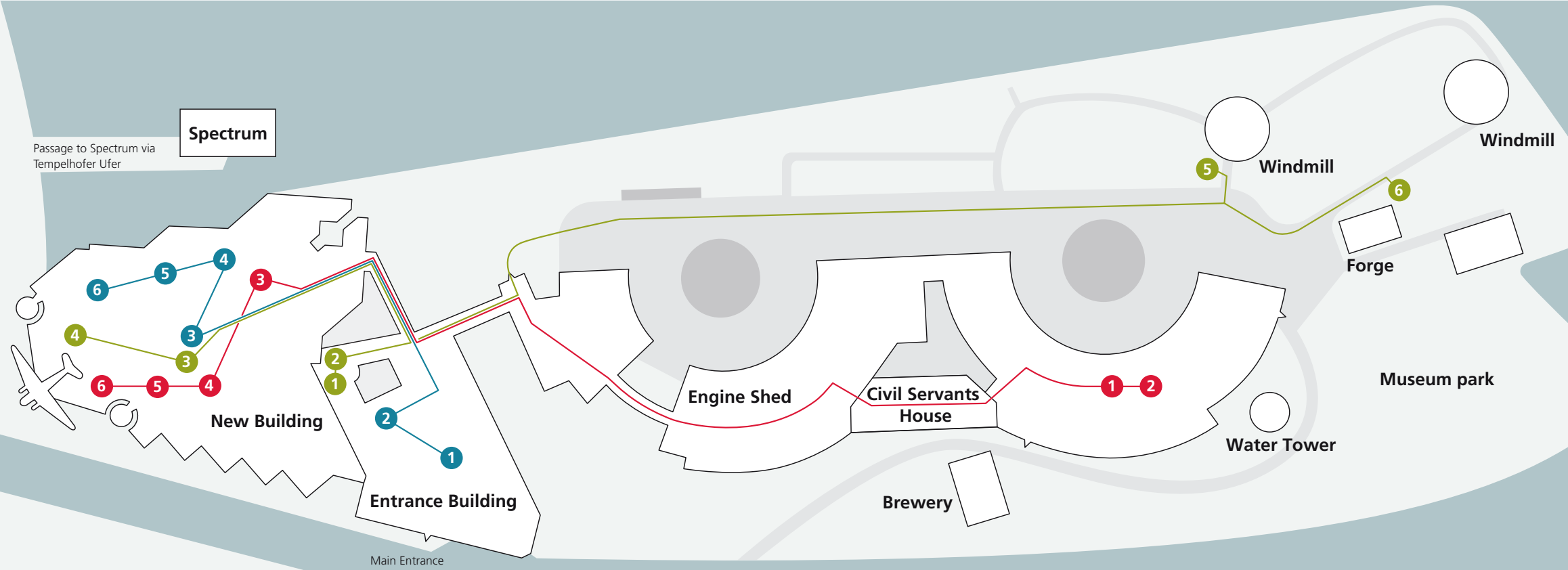
## How to explore an exhibition

Three proposed tours of Deutsches Technikmuseum in Berlin



**Tours on the themes of**

- Technology and Humans**
- Technology and Nature**
- Technology and War**



**Deutsches Technikmuseum**  
 Trebbiner Str. 9, D-10963 Berlin  
 Phone +49/30/90254-0, Fax -175  
 www.sdtb.de info@sdtb.de



Tuesday-Friday 9am - 5.30pm  
 Saturday/Sunday 10am - 6pm  
 Monday closed

ARCHENHOLD-STERNWARTE  
 DEUTSCHES TECHNIKMUSEUM  
 SCIENCE CENTER SPECTRUM  
 ZEISS-GROSSPLANETARIUM  
 ZUCKER-MUSEUM

**WWW.SDTB.DE**  
 STIFTUNG DEUTSCHES TECHNIKMUSEUM BERLIN

**Technology and Humans Tour**

Technology is produced and employed by humans. Men and women use it to make a living and to realise their ideas. The museum objects show the influence of technology on our everyday lives and relationships

**1**

**Inventor**  
 Entrance building, 1<sup>st</sup> fl.



**Konrad Zuse**  
 Z 1 computer, media station  
*An inventor won't give up.*

**2**

**Machine knitter**  
 Entrance building, 1<sup>st</sup> fl.



**Ruth M.** Flat bed knitting machine, biography, a comparison with wire weaver Ruth B.  
*A woman earning her living*

**3**

**Stoker**  
 New building, GF



**Erhard Bergschmidt**  
 The Kurt Heinz steam tug  
*A man toiling at hard physical labour*

**4**

**Skipper's family**  
 New building, GF



**The Röper family**  
 Live fish container, punt poles, audio station  
*A family living and working on a boat*

**5**

**Pilot**  
 New building, 4<sup>th</sup> fl.



**Thea Rasche**  
 Aircraft engine and propeller, media station  
*The emancipation of a woman*

**6**

**Soldier**  
 New building, 4th fl.



**Rolf Müller**  
 Stuka 87, media station  
*A man learning his limits*